

FOREST

6300 chair



SHOWN:
POWDER COAT | PEWTER METALLIC
UPHOLSTERY | ULTRALEATHER STONE
& RAVEN WING

Details on reverse

FOLDING WINGS

The 6300 has unique patient elbow-support wings that easily fold up for improved operator access from the 10 or 2 o'clock positions while supporting even your broadest patient.

HEADREST

A double articulating headrest eliminates the need for a neck pillow. A memory foam cushion allows for a stationary head position and ultimate patient comfort during the longest procedures.

MAXIMUM COMFORT

Performance car style side bolsters on the back and seat support the patient with unprecedented comfort and looks. The armrests drop down and support the patient in and out of the chair.

ULTRA THIN

The chair back is ultra thin from top to bottom providing the flexibility to position your knees under the chair back for comfortable oral access.

5 YEAR WARRANTY

The industry's most tried and tested ultra-reliable hydraulic motor and pump assembly.



World Class Design : Beautiful | Functional | Affordable



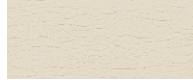
UPHOLSTERY OPTIONS - ULTRALEATHER

We have expanded our upholstery selections to include three colors in Ultraleather™ Raffia, for a textured, contemporary look. Our remaining palette in Ultraleather, **standard on our 6300 chair**, has the look and feel of the finest European calfskin. Enjoy long-lasting performance, unsurpassed ease of care and sumptuous luxury.

Additional colors are available as special order.



DOE



SAND



CASHMERE



PAPYRUS



STONE

ULTRALEATHER™



DOVE GREY



EUCALYPTUS



SHETLAND



ORCHARD



RAISENETTE



BERRY



PLUM



BALTIC

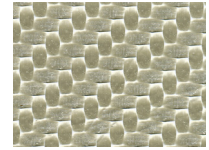


DIPLOMAT BLUE

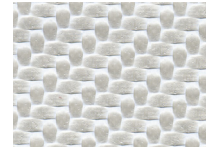


RAVEN WING

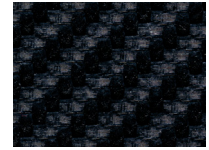
ULTRALEATHER™ Raffia



DURANGO DUST



HIGHRISE



NOCHE

RETAIL PRICING *

\$7,920

Customized Designer Friendly upcharge	\$ 792
Ultraleather Dual Color upcharge - 6307-999-SP	250
Touchpad in lieu of foot control - 6114-102-0	n/c

* Does not include utility box

1.800.423.3555
www.forestmed.com

